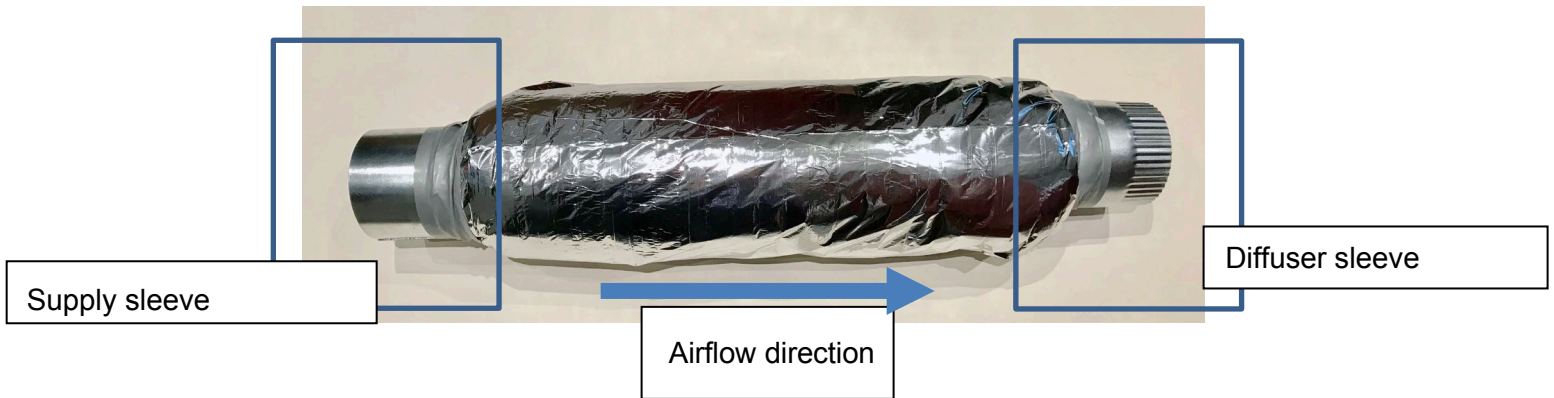


Flexible Muffler³⁸

The **FEAS Flexible Muffler** is factory-made and comes with a supply sleeve and a diffuser sleeve for easy installation. The diffuser sleeve features a 3-inch (75mm) crimped end to facilitate insertion into the diffuser. The supply sleeve has a 3-inch (75mm) flat section to make it easier to apply adhesive.



Diameter	Flexible length	Total length	Vapor barrier type and net price			
4" (102mm)	30" (762mm)	36" (914mm)	Aluminium		Polyéthylène gris	
5" (127mm)	30" (762mm)	36" (914mm)	Aluminium		Polyéthylène gris	
6" (152mm)	30" (762mm)	36" (914mm)	Aluminium		Polyéthylène gris	
8" (203mm)	30" (762mm)	36" (914mm)	Aluminium		Polyéthylène gris	

-Flexible length: Length of the insulated air duct/flexible connector

-Total length: Length of the assembly including the sleeves.

*Custom length available upon special order.