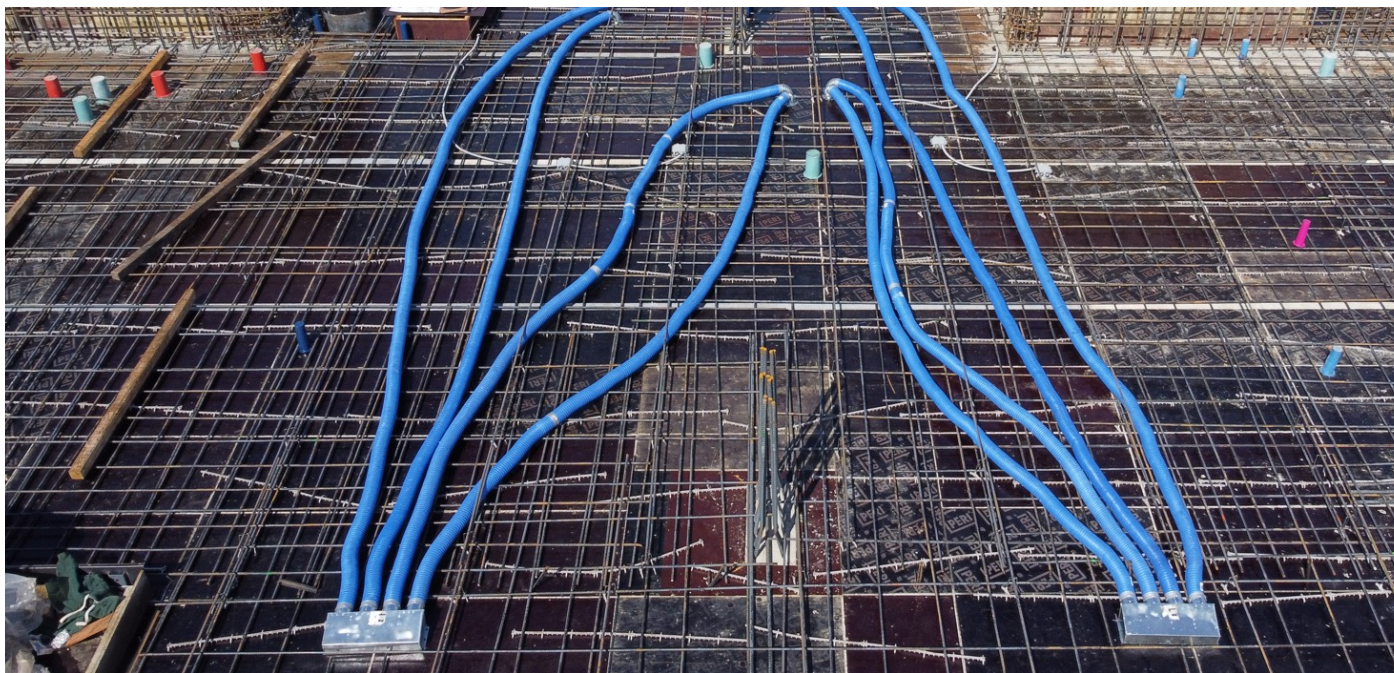




FEAS

Forest Energy and Air Solutions



FLIXS Installation Manual



Forest Energy and Air Solutions Inc.
9265 Le Royer, Montreal (Quebec)
Canada H1P 3H7
www.feas.ca

Office : (514) 750-3327
Toll-free: 1-(844)-569-6976
Fax : (514) 669-3631
E-mail: info@feas.ca

FLIXS Installation Manual

Installation material :

- | | |
|--|---|
| -FLIXS ventilation ducts | -Drill |
| -Reciprocating saw / grinder (to cut the duct to the desired length) | -Stainless steel $\frac{3}{4}$ self-drilling screws |
| -Pliers/ cutters/ shears (to cut the pins) | -FLIXSTAPE (to cover screws where installed) |
| -Steel pins (to attach the FLIXS to the rebar) | -Gloves, goggles, safety boots |

Improperly securing the pin can cause the reinforcement to shift during the concrete pour, potentially lifting the structure and damaging the pipes. We recommend that installers ensure that the reinforcement contractors have properly secured their pin to avoid this problem.

Installation instructions:

- 1 - The use of a crane to transport the FLIXS air ducts is recommended. Use only approved lifting equipment and be sure to follow the recommendations of lifting specialists. The recommended method is to insert the lifting belt or chain into the center of the air duct rolls as shown in Figure 1.

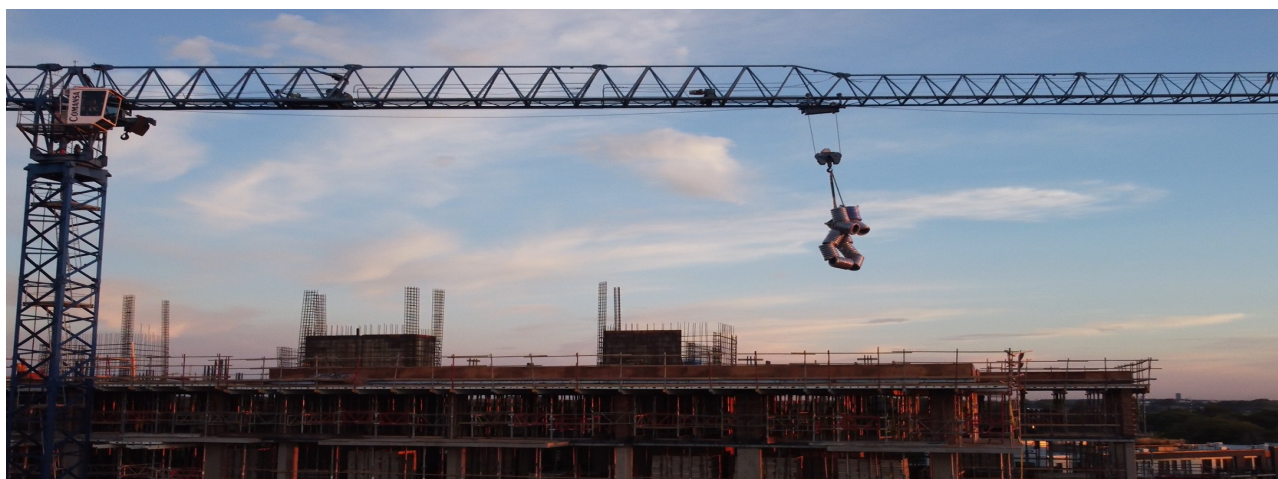


Figure 1

FLIXS Installation Manual

Installation Instructions :

- 2 -** Secure the FLIXS air ducts to the terminal using self-drilling screws, with a minimum of three screws per duct.
Ensure the screws mechanically secure the air ducts for stability (Figure 2).



Figure 2

- 3 -** Unroll the FLIXS air ducts to the desired length between the air inlet and the discharge box. Make sure the direction of the air ducts is the same as the direction of the air flow. Arrows showing the direction of the air flow are present at both ends of the ducts. Avoid making sharp turns with the air ducts to take full advantage of reduced static pressure loss (Figure 3).



Figure 3

FLIXS Installation Manual

Installation Instructions :

- 4 -** Attach the FLIXS air ducts to the lowest rebar with steel wire. Keep a regular interval of approximately 16 inches (30 cm) between each attachment point (Figure 4).



Figure 4

- 5 -** Connect the FLIXS air ducts to the 90-degree elbow, the discharge box, or the next segment of the duct system, depending on your project design. Add a layer of vinyl tape, such as FEAS FLIXSTAPE, on both ends to ensure a secure and airtight seal (Figure 5).



Figure 5

FLIXS Installation Manual

Installation Instructions :

- 6 -** When placing bundles of reinforcing bars on installed networks of FLIXS air ducts, use two wooden supports to protect the air ducts. Ensure these supports are doubled up to distribute the weight evenly and prevent damage (Figure 6).



Figure 6

- 7 -** Inspect the site and ensure the ducts are in good condition. Check for any damages, and if necessary, make the required repairs. When pouring concrete, inform all trades involved to avoid walking on the FLIXS air ducts. Although they are designed to support a person's weight, it is crucial to protect the air ducts to prevent damage (Figure 7).



Figure 7