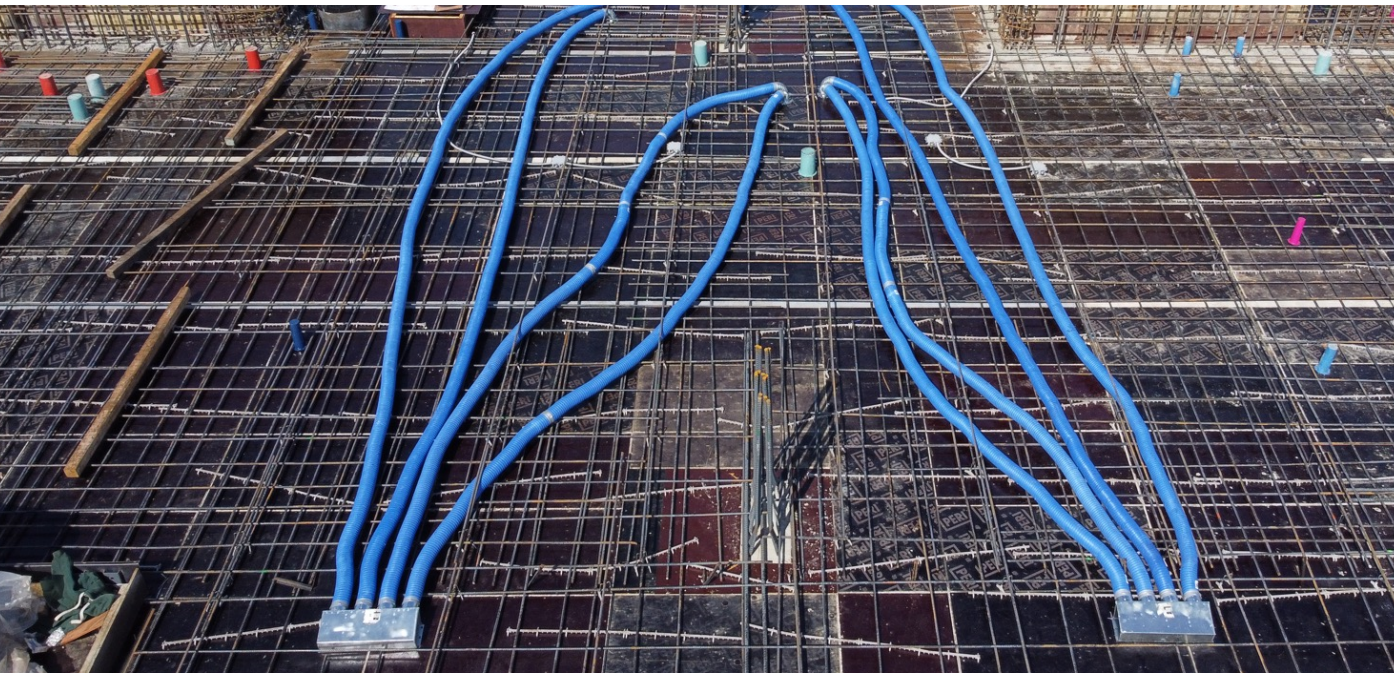




# FEAS

## Forest Energy and Air Solutions



# FLIXS Installation Manual



Forest Energy and Air Solutions Inc.  
9265 Le Royer, Montreal (Quebec)  
Canada H1P 3H7  
www.feas.ca

Office : (514) 750-3327  
Toll-free: 1-(844)-569-6976  
Fax : (514) 669-3631  
E-mail: info@feas.ca

# FLIXS Installation Manual

## Installation material :

- FLIXS ventilation duct.
- Reciprocating saw / Grinder (to cut duct to desired length)
- Pliers / cutter, shears = (To cut the pin)
- Steel pin to attach FLixs to rebar (FIX FLIXS)
- Drill
- Stainless steel  $\frac{3}{4}$  self-drilling screw
- Flex tape (Cover screws where installed)
- Gloves, goggles, safety boots.

## Instructions d'installation :

- 1 - The use of a crane to transport FLIXS flexible air duct is recommended. Use only approved lifting equipment and be sure to follow the recommendations of lifting specialists. The recommended method is to insert the lifting belt or chain into the center of the FLIXS flexible air duct rolls as shown in Figure 1.

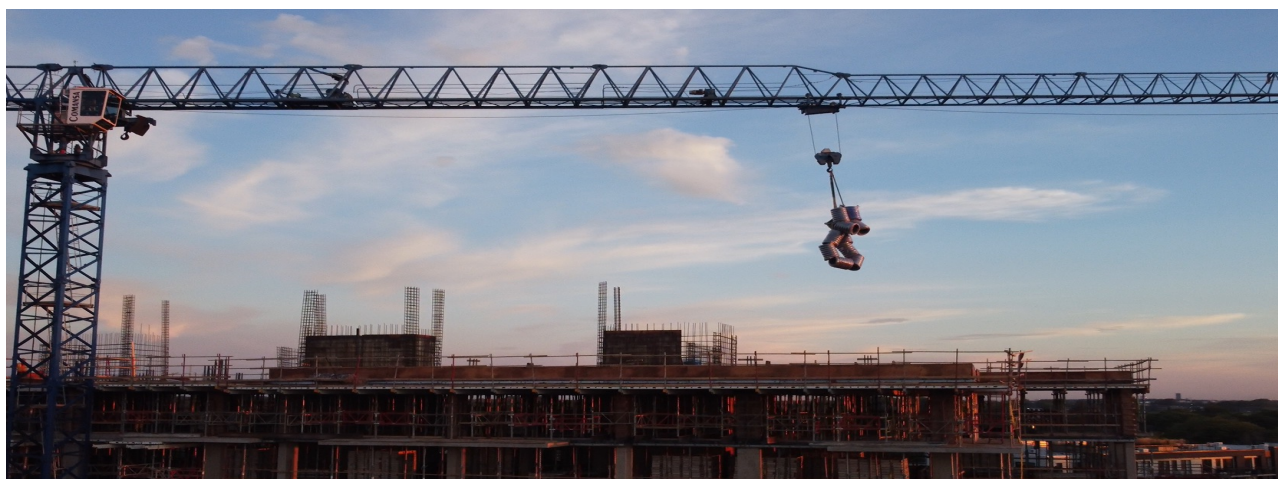


Figure 1



# FLIXS Installation Manual

## Installation Instructions :

- 2 - Secure the flexible air duct to the terminal using self-drilling screws, with a minimum of three screws per duct.  
Ensure the screws mechanically secure the liner for stability (Figure 2).



Figure 2

- 3 - Unroll the FLIXS flexible air duct to the desired length between the air inlet and discharge box. Make sure the direction of the FLIXS is the same as the direction of air flow. Arrows showing the direction of the FLIXS are present at both ends of the FLIXS. Avoid making sharp turns with the duct to take full advantage of reduced static pressure loss. (Figure 3)



Figure 3

# FLIXS Installation Manual

## Installation Instructions :

- 4 - Attach the wire to the lowest rebar with steel wire. Keep a regular interval of approximately 16 inches (30 cm) between each attachment point (Figure 4).



*Figure 4*

- 5 - Connect the other 90-degree elbow or the discharge box, or the next segment of the duct system, ensuring a secure fit, depending on your project design. Add a layer of vinyl tape, such as FEAS FLIXTAPE, on both sides to ensure a secure and airtight seal.(Figure 5).



*Figure 5*



# FLIXS Installation Manual

## Installation Instructions :

- 6 - When placing bundles of reinforcing bars on installed networks of FLIXS flexible air duct, use two wooden supports to protect the ducts. Ensure these supports are doubled up to distribute the weight evenly and prevent damage. (Figure 6).



Figure 6

- 7 - Inspect the site and ensure the ducts are in good condition. If necessary, make the required repairs and check for any damages. When pouring concrete, inform all trades involved to avoid walking on the FLIXS flexible air duct. Although it is designed to support a person's weight, it is crucial to protect the duct to prevent damage. (Figure 7)



Figure 7