

FLIXS SRGDP-TL

Technical Data

SRGDP-TL means Semi-Rigid-Galvanized-Double Wall with a thermo-laminated membrane. FLIXS is an uninsulated semi-rigid galvanized steel ventilation duct designed to be used in structural concrete slabs. This patented product has a thermolaminated polymer membrane on its exterior surface to eliminate contact between steel and concrete, thereby eliminating the development of corrosion. The interior membrane is coated with polyurethane paint providing additional protection against corrosion.

SRGDP-TL is manufactured from a double strip of 0.0055" thick galvanized steel longitudinally profiled. The outer strip is contoured and allows the flexible structure of the duct to be created. The inner membrane creates a perfectly smooth surface and is simultaneously assembled into complex 7 facet joints. This seven-facet joint provides a perfect seal at the operating static pressure shown in the table below while eliminating water leaks generated by condensation.

-The interior surface of the **SRGDP-TL** is smoother than all ducts on the market.

-The duct does not deform and thus keeps the circular surface even when it is bent at 90 degrees, limiting static pressure loss.

-No screws are required, eliminating debris buildup.

-Sloping installation is possible allowing the elimination of condensation.

-Air duct manufactured in one length without seal eliminating any possibility of water leakage.

-Thermolaminated polymer membrane

SRGDP-TL is easily foldable allowing 90-degree elbows to be formed. This product has a high seal and makes it possible to adapt to all types of systems both in terms of temperatures in heating mode and those in cooling mode.

SRGDP-TL is very robust and resists without warping when installed in a concrete slab.

Bending diameter: 1.5 - 2 times the diameter of the duct

Galvanized steel: 4" - 5" - 6"

Maximum length of 50' or custom accepted.

Materials available	Galvanized steel
Inner diameter	4.000 in
Outer diameter	4.294 in
Flame spread*	<0
Fume development*	<0
Maximum air velocity	4000 ft/min
Positive operating pressure in continuous mode	15" of WC
Negative operating pressure in continuous mode	15" of WC
Operating temperature amplitude	-60° to 75° Celsius
Duct wall thickness	0.01" (0.26mm)



*When the duct is buried in a standard concrete slab

This product meets the standards*

CAN/ULC S115-18
ASTM E814-24

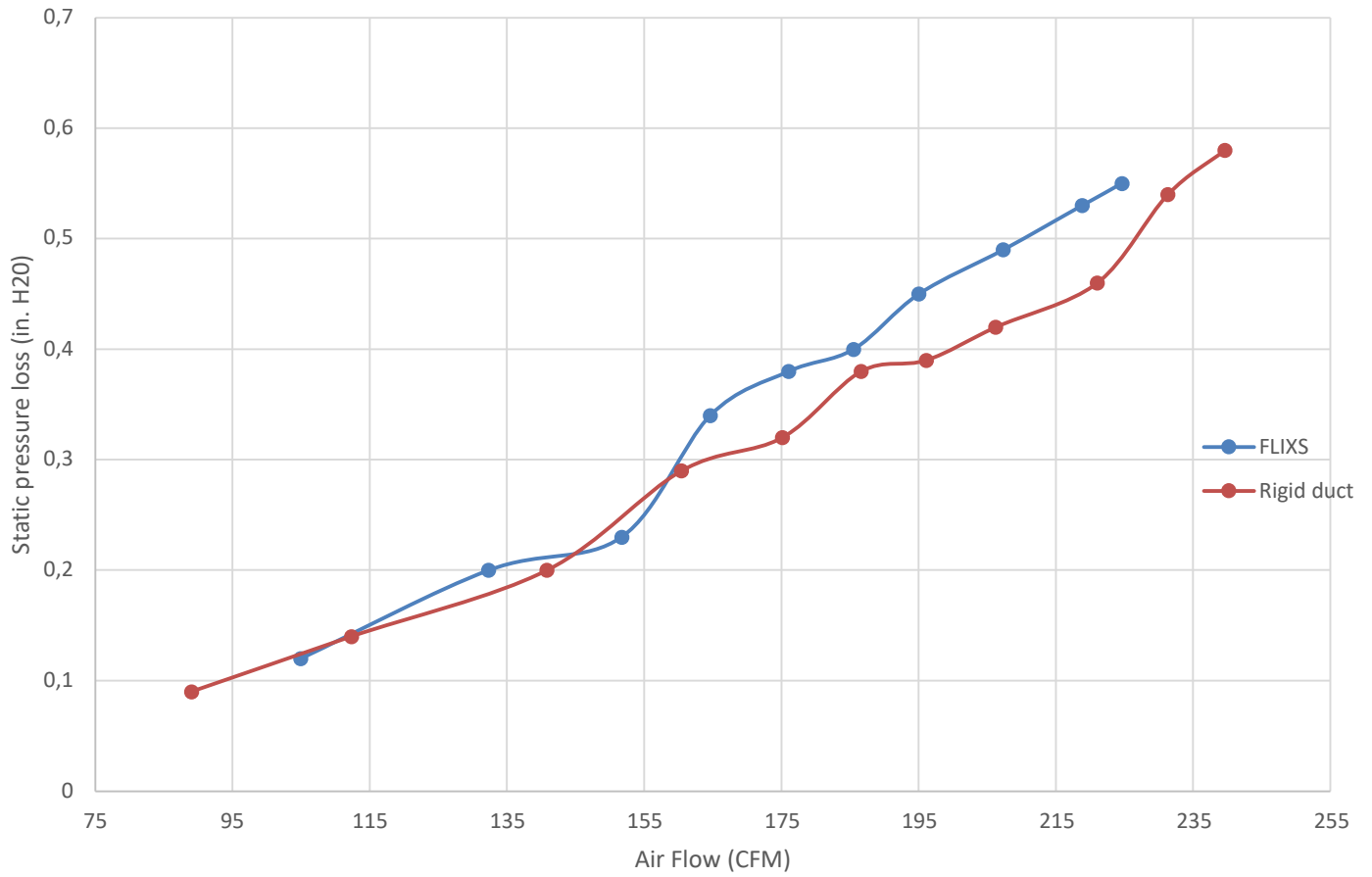
intertek
Total Quality. Assured.

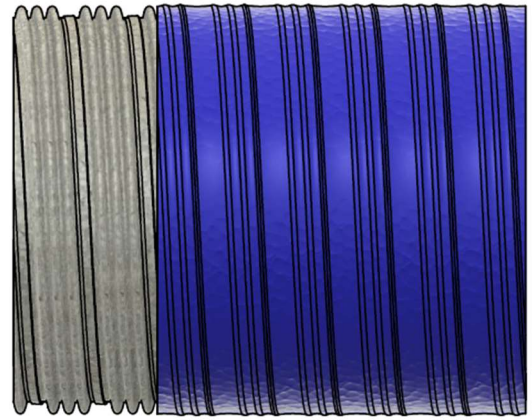
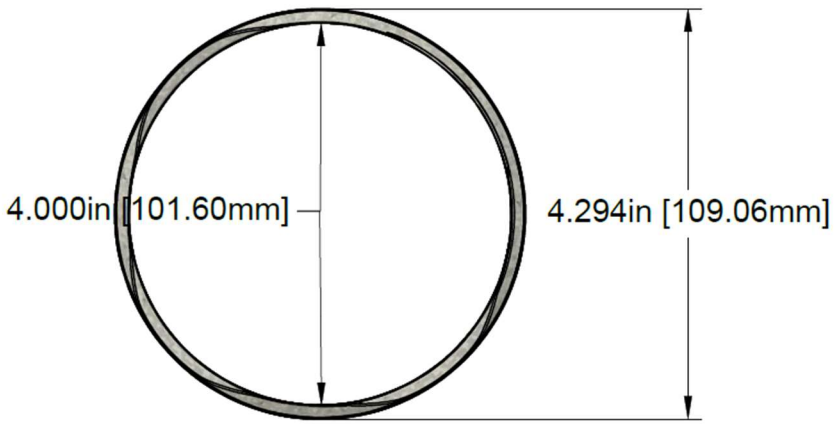


9265 Le Royer, Montreal, (Quebec), H1P 3H7
Office: (514) 750-3327; Toll free: 1-(844) 569-6976
Fax: (514) 669-3631; e-mail: info@feas.ca

FLIXS VS Rigid Duct:

Comparison of the loss of static pressure as a function of the flow rate of a 30 foot ventilation circuit comprising 3 elbows





Notes:
Inner diameter: 4.000in [101.60 mm]
Outer diameter: 4.294in [109.06 mm]

